



SEPTEMBER 2020

Newsletter

LOUISVILLEQUEENSDAUGHTERS.COM

CARD PARTY FALL FUN FEST

Mark your calendars now for
THURSDAY, OCTOBER 15th.

You should have already received your invitations and chances in the mail.

Look for exciting changes this year.

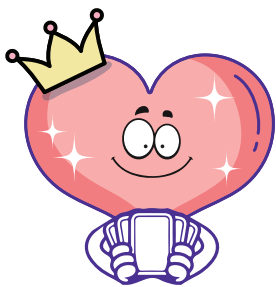
New Venue – **CROWNE PLAZA** at the Airport will offer more space for social distancing. (Use the rear entrance, near the ballroom.)

MENU includes chef's choice salad, entrée and dessert. More details about selections to follow, guaranteed to be delicious.

Chances offered on two terrific **CAPITAL PRIZES**

- **A GIFT CARD TREE** worth \$500 value
- **A GIFT CARD to WORK THE METAL** \$500 value
Work the Metal is a fabulous specialty boutique located on Story Avenue.

You are invited to be a part of a **NEW OPPORTUNITY** to help, even if you are unable to attend in person. Forward a donation in any amount to support our charitable event and be a **QUEEN OF HEARTS**. Each donor will be acknowledged in the Q.D. Newsletter unless s/he wishes to remain anonymous.



Please note this year, tables will seat only 3-6 guests
Gayle Block will be accepting reservations. When you return your reservation, please indicate the number of guests seated at your table.

Call your friends today and make plans to attend.

Contact Chair, Barbara Klump at 634-5559 or boklump@yahoo.com for more information.

IN MEMORIAM

Let us remember our member who has passed since our last newsletter:

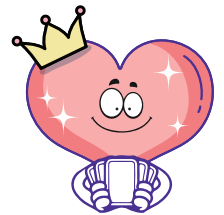
Marjorie Linnig "Marge" Finn

PRESIDENT'S MESSAGE

Dear Members,

As I write this message, it is Sunday after The Kentucky Derby in September!! Just another twist in this crazy year of 2020. By the time you receive the newsletter, our General Meeting will be over. At least 40 brave women will have enjoyed dinner at the lovely Botanical Gardens, while bringing useable goodies for the Baby Shower.

Now we are looking forward to The Card Party Fall Fun Fest, our only **FUNDRAISER** this year, since the Fashion Show had to be canceled. I hope you will support the event by inviting your friends and coming to the new location, the Crowne Plaza Louisville Airport; the ballroom has plenty of space for social distancing. But, if you do not feel comfortable going out, please support the party by buying raffle chances on the Capital Prizes and/or making a donation as a Queen of Hearts.



Hope to see you in October.

God bless and stay well!
Joyce Jennings

MOTHER-INFANT CARE PROGRAM

Family Support is still hosting the MIC and Mama Matters Support Group Programs on virtual platforms. Ten women are signed-up for the current session that will end in October. Q.D. member, Donna Koenig and others plan to make layettes to offer the participants.

MIC has also continued the On-the-Go efforts and are currently hosting a five-week program for mothers at Freedom House. We have been able to provide financial support to many participants and other mothers in the community, through COVID funding and our Lifeline Fund. This funding is supported through the Archdiocese Opportunities for Life collection.

Diapers are still offered each month to past and current participants.

Shalah, Cydnei and an additional CCL staff member will be attending the upcoming Q.D. Baby Shower on September 16th. Looking forward to seeing everyone.

Shirley Reiss, Chair

BRIDGE MARATHON

Due to the COVID Pandemic, the Bridge Marathon is on hold until January, 2021. With the assistance of Mary V. Krebs, Annette Amshoff has agreed to keep the bridge scores and mail out the bridge schedules. Keep your bridge skills ready for the near future Bridge Marathon. Email annettamshoff@gmail.com or call Annette at 502-419-4143 if you are interested in playing cards later this year. New players are always welcomed. They are not required to be members but encouraged to become a "Queen."

Annette Amshoff explained she was once a member of Queen's Daughters Junior Circle. Time advanced while she focused on family matters. A year ago, she renewed her interest and has become an active Q.D. member. Annette commented that members she has met since her renewal have impressed her. She expressed her appreciation for this group and the work they do. She recently become a Q.D. Board Member. Our organization is fortunate to have Annette back to offer her talents and outreach potentials.



2911 S. 4th Street
Louisville, KY 40208

Non-Profit Org. U.S. Postage PAID Louisville, Ky. Permit #715
--

DATES TO REMEMBER

**CARD PARTY FALL FUN FEST
AT CROWNE PLAZA AIRPORT
THURSDAY, OCTOBER 15TH**

**DAY OF REFLECTION/LOCATION TBD
THURSDAY, NOVEMBER 12TH**

**GENERAL MEETING & CHRISTMAS PARTY
AT AUDUBON COUNTRY CLUB
THURSDAY, DECEMBER 10TH**

SPECIAL ACKNOWLEDGEMENTS FOR ROSTER PUBLICATION

The Queen's Daughters 2020-2021 Membership Roster was designed by Membership Chair Leigh Raque with the guidance of Yearbook Chair, Bonnie Chester. Each year Bonnie works for months updating data and working in cooperation with the Membership Chairs to generate a most-recent membership roster that serves as a useful resource with its helpful information.

In addition to the attractive roster design, Q.D. received a bonus from generous donors. Let us recognize two Corporate Sponsors whose financial contributions offset the printing costs. Feel free to send messages of appreciation to:

Mr. Jim Ratterman, Owner, Ratterman & Sons Funeral Home, 3800 Bardstown Rd., 40218 and

Kathy Embry, Sales Director, The Forum at Brookside, 200 Brookside Dr., 40243

MEMBERSHIP NEWS

Welcome new members since the last newsletter:

Karen Habenstein, 5808 Orion Rd., 40222
502-339-9573, ostertag502@yahoo.com

Leigh Raque, Chair

After retiring, Leigh Ostertag Raque joined Q.D. She was quite familiar with the Q.D. organization due to the commitment her mother Nancy Ostertag has had for decades. Nancy served as President 1974-1976. She was also a stunning model for Q.D. Fashion Shows. Leigh is following her model mother on the runway of involvement. She accepted Chair for Membership and is currently serving on the Q.D. Board of Directors.

Deadline for the October Newsletter is October 4, 2020. Please send typed submissions to: Betty Arnett, bjcarnett@gmail.com or call (409-6074) for further information. Thank you.